



Kenya Safari

JUNE SPECIAL

Date to be determined

Day 1 After arriving Jomo Kenyatta International Airport you will be met by Maria with Maniago Safaris and transfer to **Karen Gables Lodge. Meals on Plane**

Day 2. After breakfast you will visit Giraffe Manor to feed the giraffes. Then off to lunch at Utamaduni restaurant and gift shop. After lunch you will visit Karen Blixen Museum. Out of Africa was filmed in this lovely home with Ngong Hills as the backdrop. You will return to **Karen Gables** in time for dinner and a good nights sleep.
BLD

If Available a visit to David Sheldrick Elephant Orphanage at an added cost.

<https://karengables.com/>.

Day 3 After breakfast, you will fly to Amboseli National Park. You'll be there in time for lunch and an evening game drive. At this camp you can go for a camel ride, take bush walk, and enjoy a sundowner at sunset.

Tawi Lodge BLD. <https://www.tawilodge.com/>

https://en.wikipedia.org/wiki/Amboseli_National_Park

Day 4 Today you will enjoy game drives in Amboseli. This park is crowned by Mount Kilimanjaro, Africa's highest peak. The name "Amboseli" comes from a Masai word meaning "salty dust", and it is one of the best places in Africa to view large herds of elephants up close. Nature lovers can explore five different habitats, ranging from the dried-up bed of Lake Amboseli, wetlands with sulphur springs, the savannah and woodlands. **Tawi Lodge BLD**

Day 5 After breakfast you will fly to Samburu National Reserve. This park lies on the banks of the [Ewaso Ng'iro](#) river. The [Ewaso Ng'iro](#) river flows through doum palm groves and thick riverine forests. It provides water, without which the game in this arid region could not survive.

The Samburu National Reserve was one of the two areas in which conservationists [George](#) and [Joy Adamson](#) raised Elsa the lioness, made famous in the best-selling book and award-winning movie Born Free **Elephant Bedroom BLD**

<https://www.atua-enkop.com/elephant-bedroom-camp>

https://en.wikipedia.org/wiki/Samburu_National_Reserve

Day 6/7 For the next two days you will enjoy game drives at your leisure in Samburu, one of the best bird areas of Kenya. **Elephant Bedroom BLD**



Day 8 This morning you will fly to the Masai Mara. This park is famous for it's cats and wildebeest. Your camp is right on the Mara river where you will see animals come to drink or crocodiles sunbathing on the shore. **Entim Mara Camp or Ilkellani Camp**

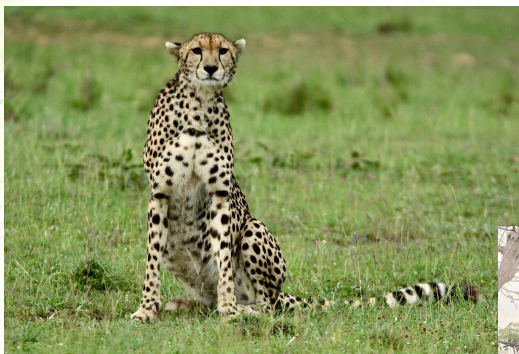
<https://www.entim-mara.com/>

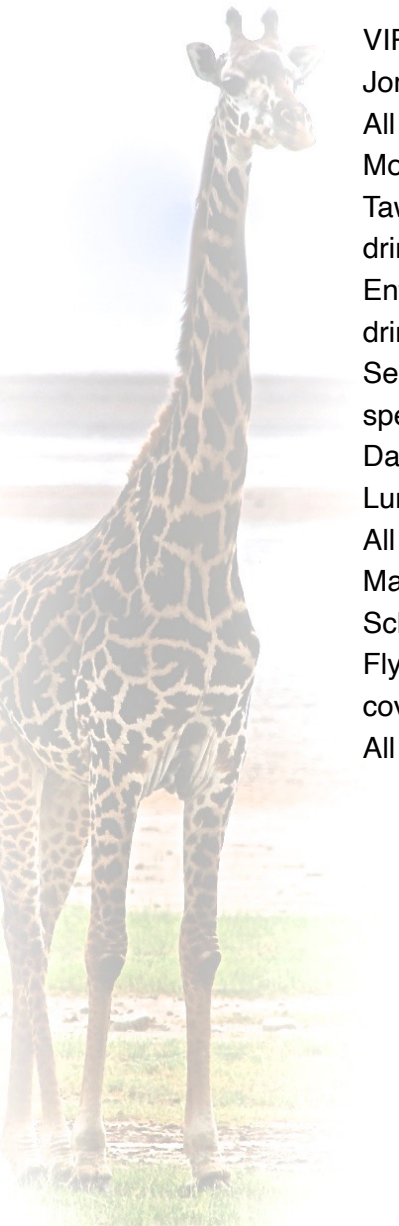
<https://ilkeliani.com/>

https://en.wikipedia.org/wiki/Maasai_Mara

Day 9/10 The next three days you will explore the Mara and also visit a Masai village. The Masai are a nomadic tribe who believes all cows belong to them. Their diet consist of cow's milk and blood. This park is where the migration takes place bringing numerous cats, zebra and buffalo with them. **Entim Mara Camp or Ilkellani Camp BLD**

Day 11 After breakfast today you will fly back to Nairobi for lunch at Karen Blixen Coffee garden and last minute shopping. You'll have a day room to prepare for your flight home with lots of photos and beautiful memories. **Four Points by Sheraton Nairobi Airport. BL only. Dinner on your own.**





Includes:

- VIP meet and greet upon arrival at Jomo Kenyatta International Airport
- All lodges mentioned in the itinerary
- Most Meals
- Tawi includes house wine, beer, soft drinks and selected spirits
- Entim includes house wine, beer, soft drinks and selected spirits
- Services of highly qualified English speaking private driver
- Day room day of departure
- Lunch at Karen Blixen Coffee Garden
- All park passes
- Masai village visit
- Scheduled in country flights
- Flying doctors temporary membership to cover evacuation only
- All taxes

Excludes:

- International airfare
- Visa to be applied for online <https://evisa.go.ke/>.
- All drinks including water. There is water on game drives and in your rooms.
- Tips and gratuities
- Item of personal nature such as massages, laundry, etc.
- Travel insurance, highly recommended.**
- This trip is non refundable.**
- Click below for recommended company.
- https://advisors.travelguard.com/buy?rcode=&ta_arc=346593
- Optional activities available on safari
- Anything not mentioned in this itinerary.





2 to the vehicle \$10,900 per person

Single supplement \$1700 per person

A discount will apply for 3-6 in the vehicle

Untamed Expeditions

P.O. Box 473

Easton, MD. 21606

linda.safaris@icloud.com

410 371 8405